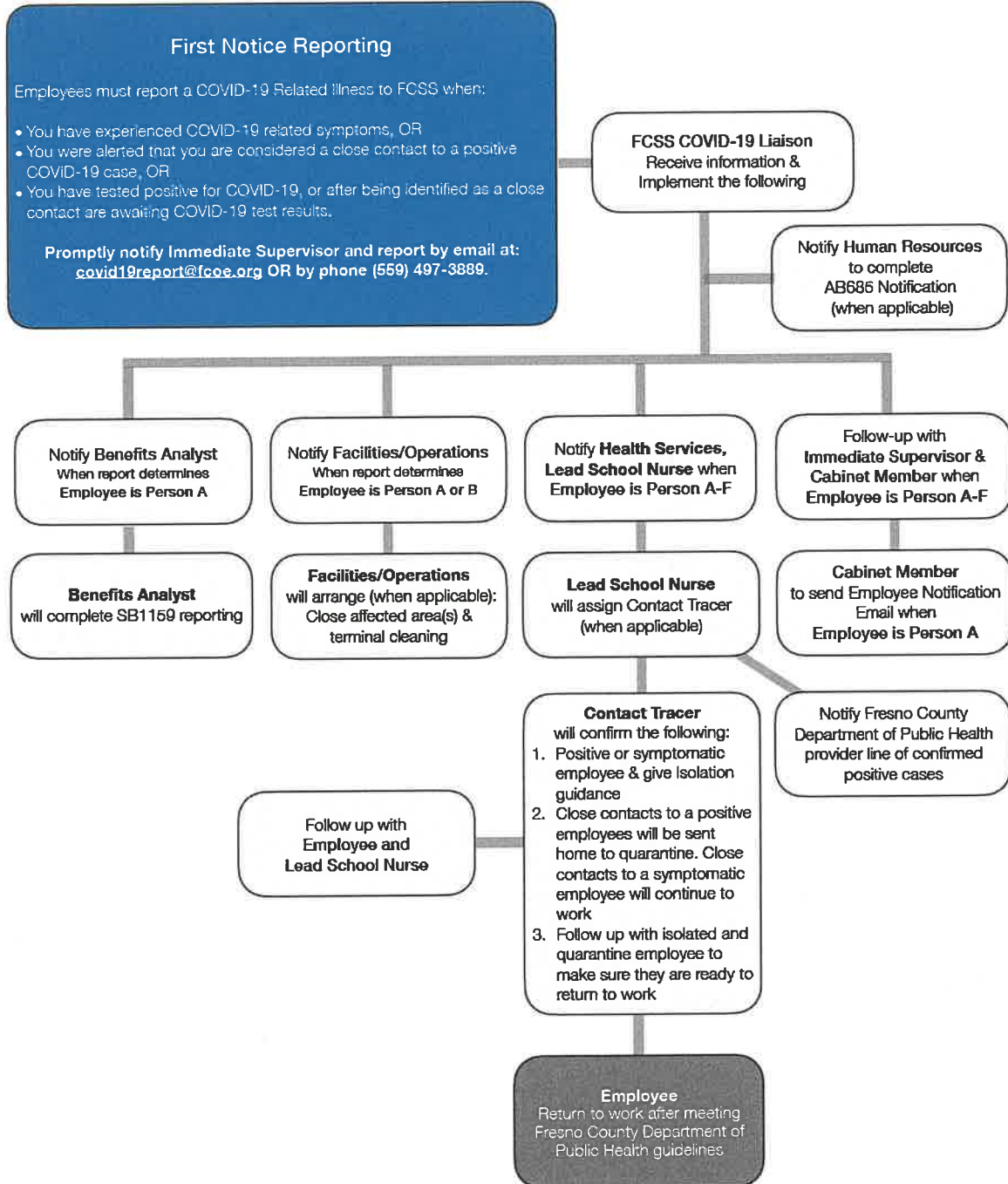


FIRST NOTICE REPORTING FLOWCHART ONCE EMPLOYEE REPORTS A COVID-19 RELATED ILLNESS

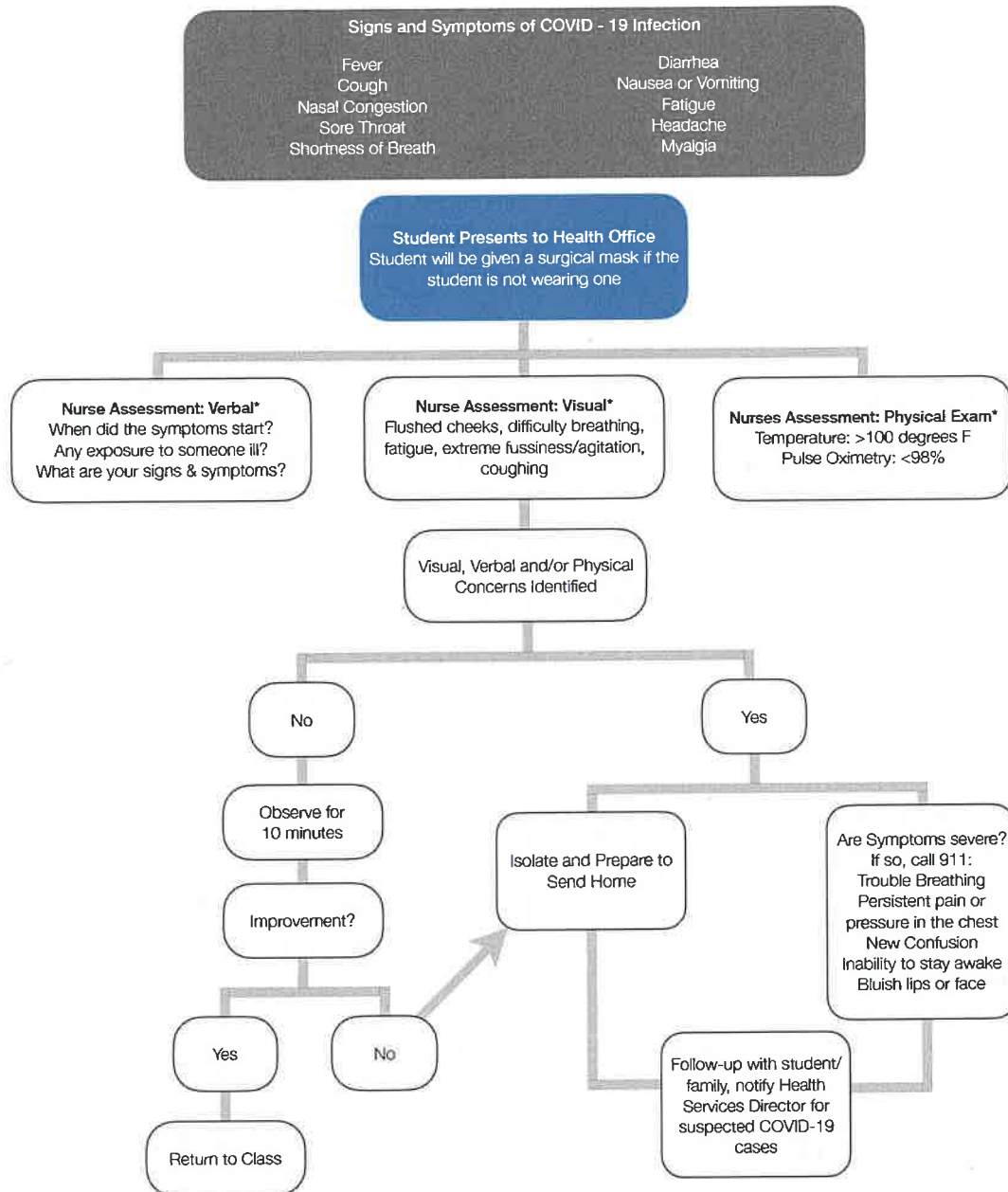
Purpose: The First Notice Reporting Flowchart was designed to demonstrate the internal process that takes place after an employee reports a COVID-19 related illness.



Important Note: Aside from the specified contacts noted above on this flow chart, the County Superintendent and FCSS employees should not identify any such employee by name in the workplace to ensure compliance with privacy laws. FCSS may notify affected employees in a way that does not reveal personal health-related information of an employee.

COVID-19 SCREENING FLOWCHART OF FCSS STUDENTS

Purpose: The COVID-19 Screening Flowchart of FCSS Students was designed to demonstrate the internal process when a student presents signs and symptoms of COVID-19 to a Health Office.

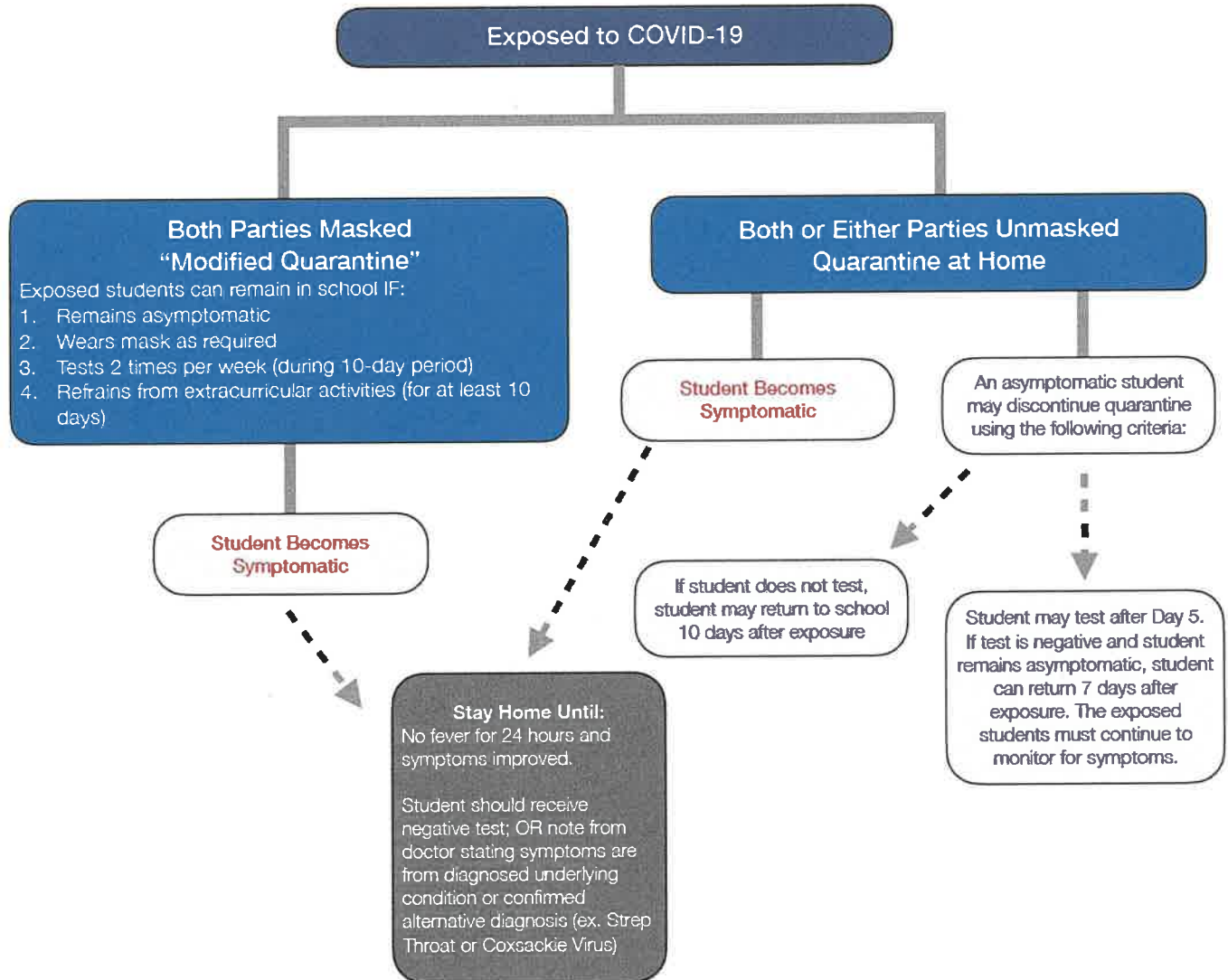


*If school nurse is not physically available at the school site/campus, call the school nurse for consultation.

** Symptomatic students will be sent home to isolate according to the Return-to-Work Toolkit. The remaining students in the classroom will continue with their school day. If the symptomatic student becomes a confirmed positive COVID case, close contacts will be identified and sent home to quarantine according to the Return-to-Work Toolkit.

RETURN-TO-WORK/SCHOOL AFTER COVID-19 EXPOSURE NOT FULLY VACCINATED STUDENTS

Purpose: The Return-to-Work/School After COVID-19 Exposure for Not Fully Vaccinated Students was designed to demonstrate which quarantine timeline needs to be followed when a student is exposed to COVID-19.



Important Note: Fully vaccinated individuals DO NOT need to quarantine if exposed to a positive COVID-19 person, but should monitor themselves for COVID-19 symptoms.

FCSS Students COVID-19 Illness and Quarantine Guidelines

Report all cases to the school absence reporting line.

STUDENT A	STUDENT B	STUDENT C	STUDENT D	STUDENT E	STUDENT F
<p>Any student who has tested positive for COVID-19 & confirmed with lab result</p> <p>With symptoms: Isolation until the following requirements have been met:</p> <ul style="list-style-type: none"> ✓ 10 days since symptoms first appeared and ✓ 24 hours (1 day) with no fever without the use of fever-reducing medicine) and ✓ <u>Symptoms</u> have improved <p>*The 24 hours without fever may possibly occur within the 10 days of isolation, or after the 10 days</p> <p>Without symptoms (asymptomatic):</p> <ul style="list-style-type: none"> ✓ Monitor self for symptoms, take temperature twice a day ✓ Released from isolation after 10 days have passed as long as no symptoms have been present 	<p>Any student who is solely asymptomatic or who has tested for COVID-19 due to symptoms and waiting for lab results</p> <p>With symptoms: Isolation until the following requirements have been met:</p> <ul style="list-style-type: none"> ✓ 24 hours* (1 day) with no fever (without the use of fever-reducing medicine) and ✓ <u>Symptoms</u> have improved <p>*Student B should have a negative test for SARS-CoV-2, OR a healthcare provider has provided documentation that the symptoms are typical of their underlying chronic condition (e.g., allergies or asthma) OR a healthcare provider has confirmed an alternative named diagnosis (e.g., Streptococcal pharyngitis, Coxsackie virus), OR at least 10 days have passed since symptom onset.</p>	<p>Any student who lives in the same household with Person A</p> <p>If Student C is without symptoms (asymptomatic):</p> <ul style="list-style-type: none"> ✓ Quarantine for 10 days following date of last exposure including complete separation from the person in your house with COVID-19. This means no contact, no time together in the same room, and no sharing of any spaces, such as same bathroom or bedroom. ✓ Quarantine to continue after Person A completes their isolation if unable to avoid exposure to Person A. ✓ If Student C remains asymptomatic, they may discontinue quarantine under the following conditions: <ul style="list-style-type: none"> ✓ Day 10 from the date of last exposure without testing ✓ Day 7 if a diagnostic specimen is collected after Day 5 from the date of last exposure and tests negative. <p>*If Student C becomes symptomatic, follow the instructions under Student B.</p>	<p>Any student with close contact to Person A (>15 min (cumulative per day), < 6 feet)</p> <p>If Student D is exposed and both Student D and the positive student were UNMASKED, Student D must quarantine.</p> <p>If Student D remains asymptomatic, they may discontinue quarantine under the following conditions:</p> <ul style="list-style-type: none"> ✓ Quarantine can end after Day 10 from the date of last exposure without testing ✓ Quarantine can end after Day 7 if a diagnostic specimen is collected after Day 5 from the date of last exposure and tests negative. <p>If Student D is exposed and both students were MASKED, Student D may enter a "Modified Quarantine". Students under a Modified Quarantine can continue to come to school under the following conditions:</p> <ul style="list-style-type: none"> ✓ Are asymptomatic ✓ Continue to appropriately mask, as required ✓ Undergo at least twice weekly testing during the 10-day quarantine, and ✓ Continue to quarantine for all extracurricular activities at school, including sports, and activities within the community setting. 	<p>Any student who has had exposure to Student B, C OR D</p> <p>NO QUARANTINE OR ACTION REQUIRED</p> <ul style="list-style-type: none"> ✓ Continue to self-certify your health on a daily basis. <p>If Student B, C or D with whom Student E had exposure within 14 days tests positive (timeframe should start 2 days before Student B, C or D develops symptoms), then follow directions for Student D.</p>	<p>Any student who is fully vaccinated against COVID-19</p> <p>Student F needs to mask and should continue to practice handwashing, etc.</p> <p>If Student F is exposed to COVID-19:</p> <ul style="list-style-type: none"> ✓ If asymptomatic, no quarantine is needed. ✓ If symptomatic, COVID-19 testing and contacting primary physician is recommended. Student may return to school when symptoms-free for 24 hours. <p>If Student F tests positive for COVID-19:</p> <ul style="list-style-type: none"> ✓ Must isolate for 10 days and can return when symptom-free for 24 hours (1 day) with no fever (without the use of fever-reducing medicine).

Definitions:

Isolation separates infected people with a contagious disease from people who are not sick.

Quarantine separates and restricts the movement of people who were exposed to a contagious disease to see if they become sick.

Close Contact a person within 6 feet for more than 15 minutes (cumulative per day), regardless of whether person(s) are wearing a mask, starting from 48 hours before the person began feeling sick.

Updated 7/19/2021

Recovered and Released